

## WERKCONFERENTIE CIRCULAIR BOUWEN AAN MORGEN 2026

### 1. Net Zero Carbon

Altera's goal is to achieve operationally Paris Proof portfolios by 2040 as well as to reduce embodied carbon emissions.

### 2. Climate Resilience

Altera focuses on adapting its portfolios to be resilient to physical climate risks. This includes the implementation of nature-based solutions and increasing biodiversity.

### ESG Strategy

### 3. Social Impact

Altera aims to contribute to social impact by continuously evaluating tenant and societal needs. Focus themes are tenant engagement, diversity and inclusion, and sustainable homes.

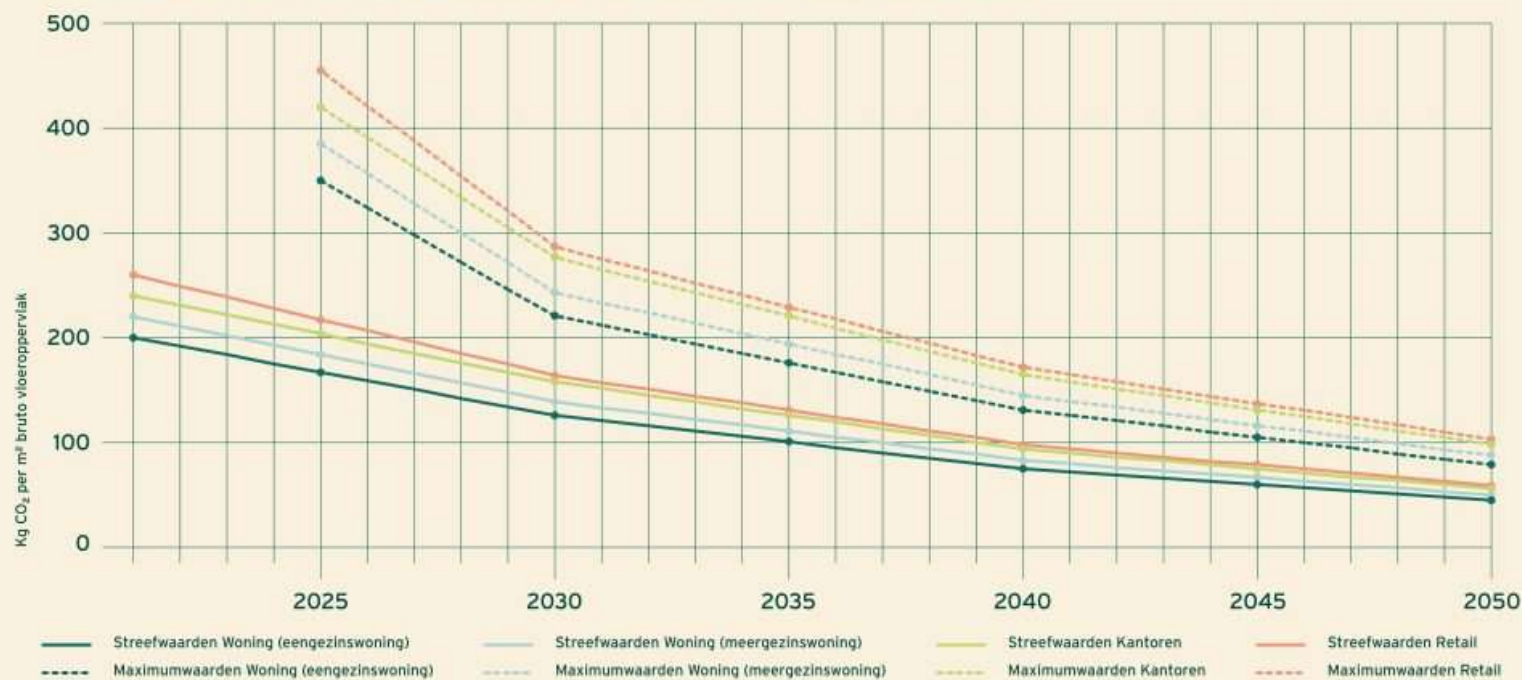
### 4. Responsible Management Platform

The objectives within the first three pillars are achieved by means of an efficient and effective management platform that has integrated ESG in the main processes and provides transparent reporting.

- Paris Proof operationeel
- CO2-norm materiaalgebonden emissies
- Geen klimaatrisico's
- Taxonomy-aligned

## CO<sub>2</sub>-commitment vastgoedpartijen

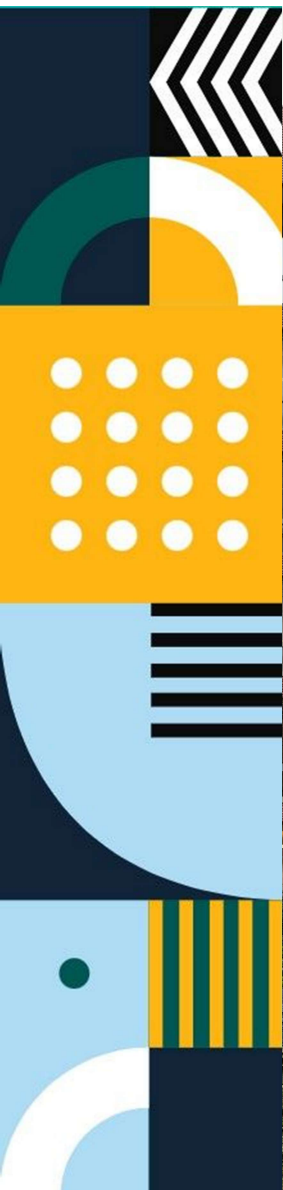
Streef- en maximumwaarden voor de materiaalgebonden emissies in nieuwbouwprojecten (GWP<sub>a</sub>)





WERKCONFERENTIE  
CIRCULAIR BOUWEN  
AAN MORGEN 2026





WERKCONFERENTIE  
CIRCULAIR BOUWEN  
AAN MORGEN 2026